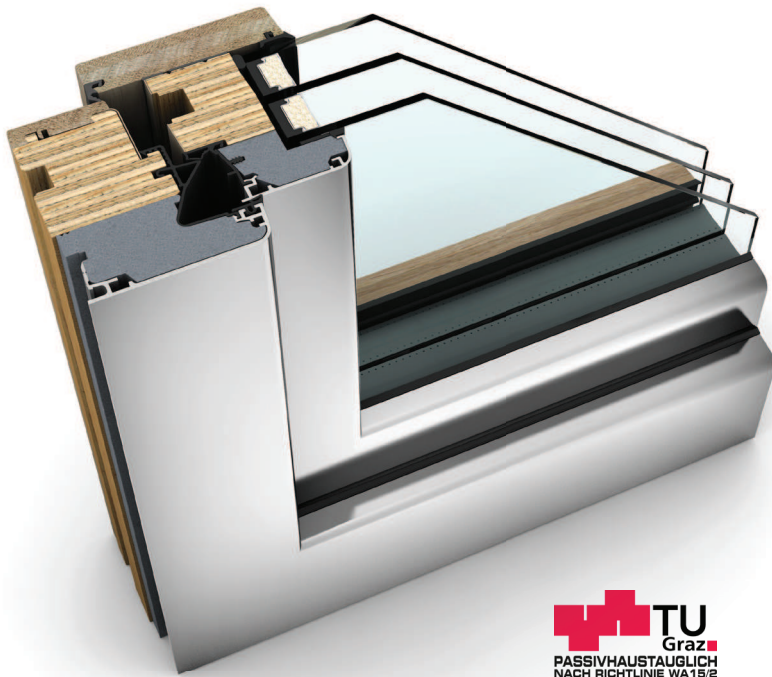







HF 410 TIMBER/ALUMINIUM WINDOW



TU
Graz
PASSIVHAUSTÄUGLICH
NACH RICHTLINIE WÄ15/2

PROPERTIES

	Thermal insulation	U_w as low as 0.64 W/(m²K)
	Sound reduction	up to 45 dB
	Security	RC1N, RC2
	Locking	concealed
	Construction depth	85 mm

I-tec Glazing
I-tec Core



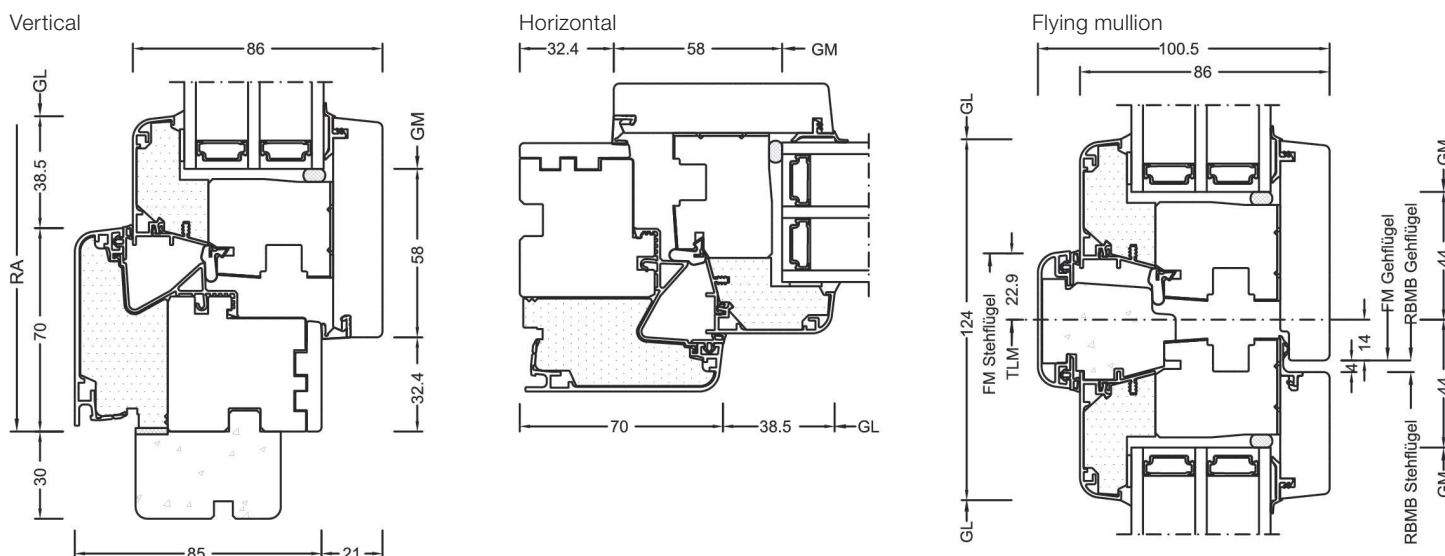
Experience HF 410 interactively
now with Augmented Reality



HF 410

Sophisticated colour combinations of furniture, windows and floors bring a unique flair to your rooms. The wide colour and timber range of the new timber/aluminium window HF 410 offers you countless possibilities for the harmonious design of your living space. In addition to many types of timber, we now also offer you a high-quality laminated timber composite encased with solid spruce. Particularly resource-saving and available at an attractive price/performance ratio.

Sections



Values

Glass buildup	GC	Spacer	Coating	U _g	g	U _f	Psi	U _w	Thermal certif.	R _w	C	C _{tr}	Sound certif.
4b/18Ar/4/18Ar/b4	3N2	Iso	ECLAZ	0.5	60%	0.86	0.033	0.70	YES	35	-2	-6	YES
		Alu	ECLAZ	0.5	60%	0.86	0.079	0.80	YES				
6b/18Ar/4/16Ar/b4	33U	Iso	ECLAZ	0.6	59%	0.86	0.033	0.78*	YES	39	-2	-6	YES
		Alu	ECLAZ	0.6	59%	0.86	0.079	0.89*	YES				
44b.2(VSG-S)/ 15Ar/4/12Ar/ b44.2(VSG-S)	3FH	Iso	ECLAZ	0.7	55%	0.86	0.033	0.88*	YES	45	-2	-6	YES
		Alu	ECLAZ	0.7	55%	0.86	0.079	0.99*	YES				
4b/16Ar/4/15Ar/b44.2(VSG-S)	34N	Iso	ECLAZ	0.6	60%	0.86	0.033	0.78*	YES	42	-3	-7	YES
		Alu	ECLAZ	0.6	60%	0.86	0.079	0.89*	YES				

Values for **home pure** with test certificate

ECLAZ®

Daylight is crucial for our human organism, our wellbeing and our health. Therefore, Internorm windows are equipped with premium glass coating ECLAZ® as standard. The blue components of the light spectrum are transported through the glass more and ensure up to 10 % more daylight. Compared to conventional market glazing, ECLAZ® is offering:

More aesthetics – colour-neutral outside view, a combination of function and aesthetics

More light – up to 10% more daylight – better for health and wellbeing – a significant advantage especially in the dark winter months*

Visual comfort – for a brilliant view to the outside

Room comfort – makes living areas even lighter and friendlier

Energy efficiency – excellent insulation of interior thus reducing heating costs - increased energy efficiency in building - up to 11 % less CO₂ emissions

* In direct comparison to same glass buildups.