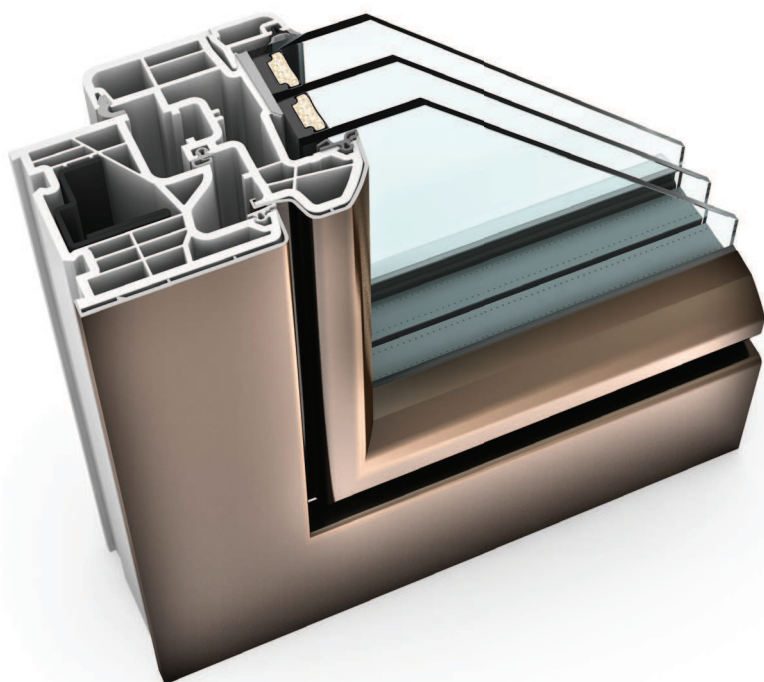




ambiente

KF 310 UPVC & UPVC/ALUMINIUM WINDOW



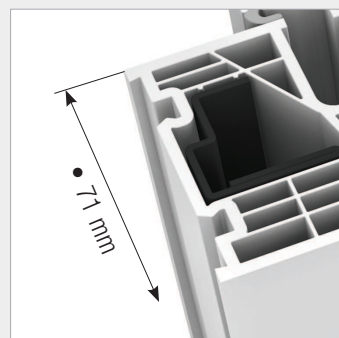
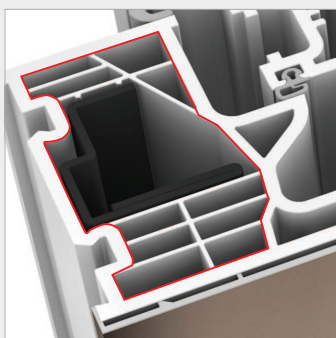
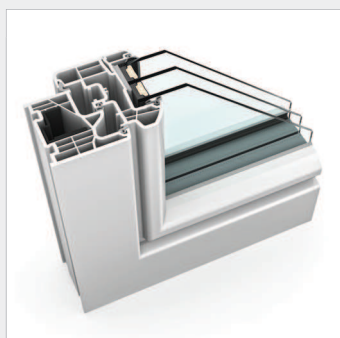
PROPERTIES

	Thermal insulation	U_w as low as 0.69 W/(m ² K)
	Sound reduction	up to 45 dB
	Security	RC1N, RC2
	Locking	concealed
	Construction depth	71/74 mm

I-tec Glazing



Experience KF 310 interactively now with Augmented Reality

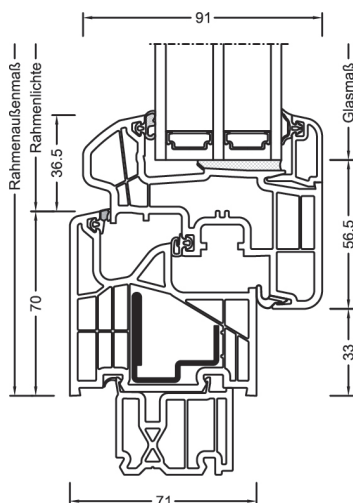


KF 310

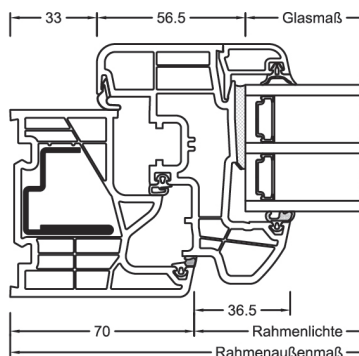
The rounded edges of sash and frame convey harmony, either as UPVC window in classic white or with protective aluminium attachment clad. I-tec Glazing, the continuous all round bonding of the glass pane, makes the window even more stable and increases burglary protection. The new 6-chamber frame profile ensures even better thermal insulation. KF 310 is a very slim window with a construction depth of 71 mm (or 74 mm with aluminium clad).

Sections

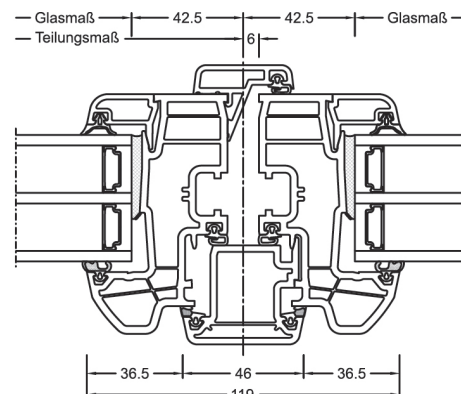
Vertical



Horizontal



Flying mullion



Values

Glass buildup	GC	Spacer	Coating	U _g	g	U _f	Psi	U _w	Thermal certif.	R _w	C	C _{tr}	Sound certif.
4/16Ar/b4	20L	Iso	ECLAZ	1.1	71%	1.2	0.038	1.2	YES	33	-2	-6	YES
		Alu	ECLAZ	1.1	71%	1.2	0.065	1.3	YES	33	-2	-6	YES
8/12Kr/b4	2KA	Iso	ECLAZ	1.0	68%	1.2	0.038	1.1	YES	37			no
		Alu	ECLAZ	1.0	68%	1.2	0.065	1.2	YES	37			no
4b/18Ar/4/18Ar/b4	3N2	Iso	ECLAZ	0.5	60%	1.1	0.034	0.76	YES	34	-2	-6	YES
		Alu	ECLAZ	0.5	60%	1.1	0.075	0.86	YES	34	-2	-6	YES
6b/18Ar/4/16Ar/b4	33U	Iso	ECLAZ	0.5	59%	1.1	0.034	0.76	YES	39	-2	-6	YES
		Alu	ECLAZ	0.5	59%	1.1	0.075	0.86	YES	39	-2	-6	YES
"44b.2(VSG-S)/15Ar/4/12Ar/b44.2(VSG-S)"	3FH	Iso	ECLAZ	0.7	55%	1.1	0.034	0.90	YES	45	-2	-6	YES
		Alu	ECLAZ	0.7	55%	1.1	0.075	1.0	YES	45	-2	-6	YES

ECLAZ®

Daylight is crucial for our human organism, our wellbeing and our health. Therefore, Internorm windows are equipped with premium glass coating ECLAZ® as standard. The blue components of the light spectrum are transported through the glass more and ensure up to 10 % more daylight. Compared to conventional market glazing, ECLAZ® is offering:

More aesthetics – colour-neutral outside view, a combination of function and aesthetics

More light – up to 10% more daylight – better for health and wellbeing – a significant advantage especially in the dark winter months*

Visual comfort – for a brilliant view to the outside

Room comfort – makes living areas even lighter and friendlier

Energy efficiency – excellent insulation of interior thus reducing heating costs - increased energy efficiency in building - up to 11 % less CO₂ emissions

* In direct comparison to same glass buildups.