

GLASSES



Satinato white



Satinato green
(only for Doors)



Satinato blue
(only for Doors)



Chinchilla



Linea



UADI



Kathedral hammered



Altdeutsch K



Reflo



Masterpoint



Wire glass



Mastercarré



Ornament 504

There is a comprehensive selection of glasses available matching the respective window and door series in the different design styles.

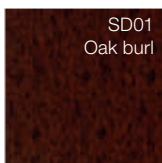
Variable glass cut-outs are available upon request and after technical inspection.

Please note that not every glass is available for every door series. Due to printing and manufacturing technology colour and structure deviations between illustrations in this brochure and original products may occur.

Your **Internorm [1st] window partner / distribution partner** will gladly show you original colour samples.

EXTERNAL SIDE OF WINDOWS AND DOORS

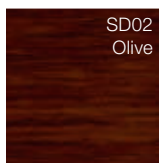
SD COLOURS (ONLY FOR DOORS)



SD01
Oak burl



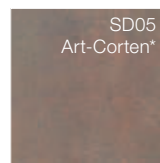
SD04
High gloss
black



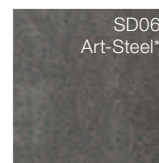
SD02
Olive



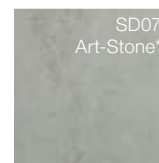
SD03
Art-



SD05
Art-Corten*



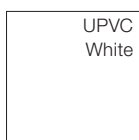
SD06
Art-Steel*



SD07
Art-Stone*

*Available on technical request.

UPVC



UPVC
White

Please note that not every colour is available for every window and door. Due to printing and manufacturing technology colour deviations between illustrations in this brochure and original products may occur.

Your **Internorm [1st] window partner / distribution partner** will gladly show you original colour samples.

ALUMINIUM ATTACHMENT CLAD

STANDARD COLOURS*



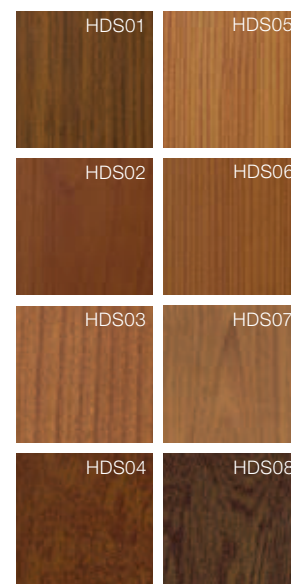
NEW: DURAxal COLOURS



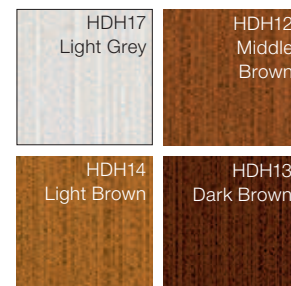
hiRest-COLOURS***



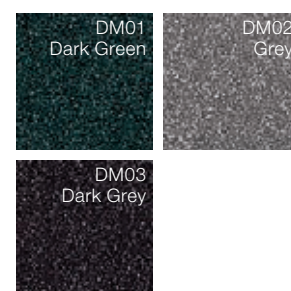
HDS COLOURS**



TIMBER DECOR COLOURS****



METALLIC DECOR COLOURS



SPECIAL COLOURS

A variety of design possibilities are offered by the Internorm RAL colour range (facade quality). These are the colours available for aluminium attachment clads outside and timber inside.

* **Highly weather-resistant**, except M916 (facade quality).

** Intensive colour appearance, however colour tolerances possible.

*** A special highly weather-resistant powder coating is used for surface versions **HM** (highly weather-resistant standard colour), **HF** (highly weather-resistant fine structure), **HFM** (highly weather-resistant fine structure metallic), and **HDH** (highly weather-resistant timber decor colour).

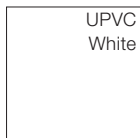
**** **HDH colours** have a vibrant timber appearance being hand-finished with structure coating, however colour tolerances are possible.

STAINLESS STEEL COLOURS



INTERNAL VIEW OF WINDOW

UPVC



DECOR FOILS



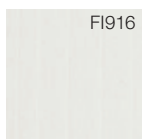
- * Available for KF 500, KF 410 and KV 440 in studio and home pure as well as KF 310 and KV 350 in all available design styles
- ** Available for KF 410, KF 200 and KV 440 in home soft and ambiente as well as KF 310 and KV 350 in all available design styles
- *** Only for KS 430, KF 310 and KV 350

TIMBER

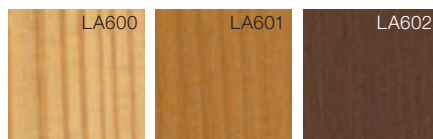
STANDARD COLOUR SPRUCE, VARNISHED



STANDARD COLOUR SPRUCE, OPAQUE

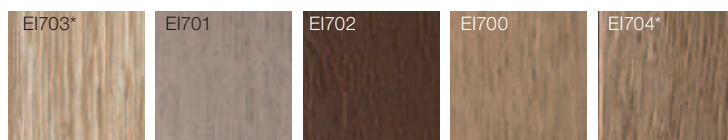


STANDARD COLOUR LARCH, VARNISHED



COLOURS HF 410 – additionally available to timber standard colours

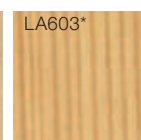
OAK



ASH



LARCH



WALNUT



NEW: Also available different types of timber for windows can be used for timber/aluminium window HF 410 and timber/aluminium lift-sliding door HS 330.

EI 703, EI 704 and LA 603 not available for HS 330.

* Brushed